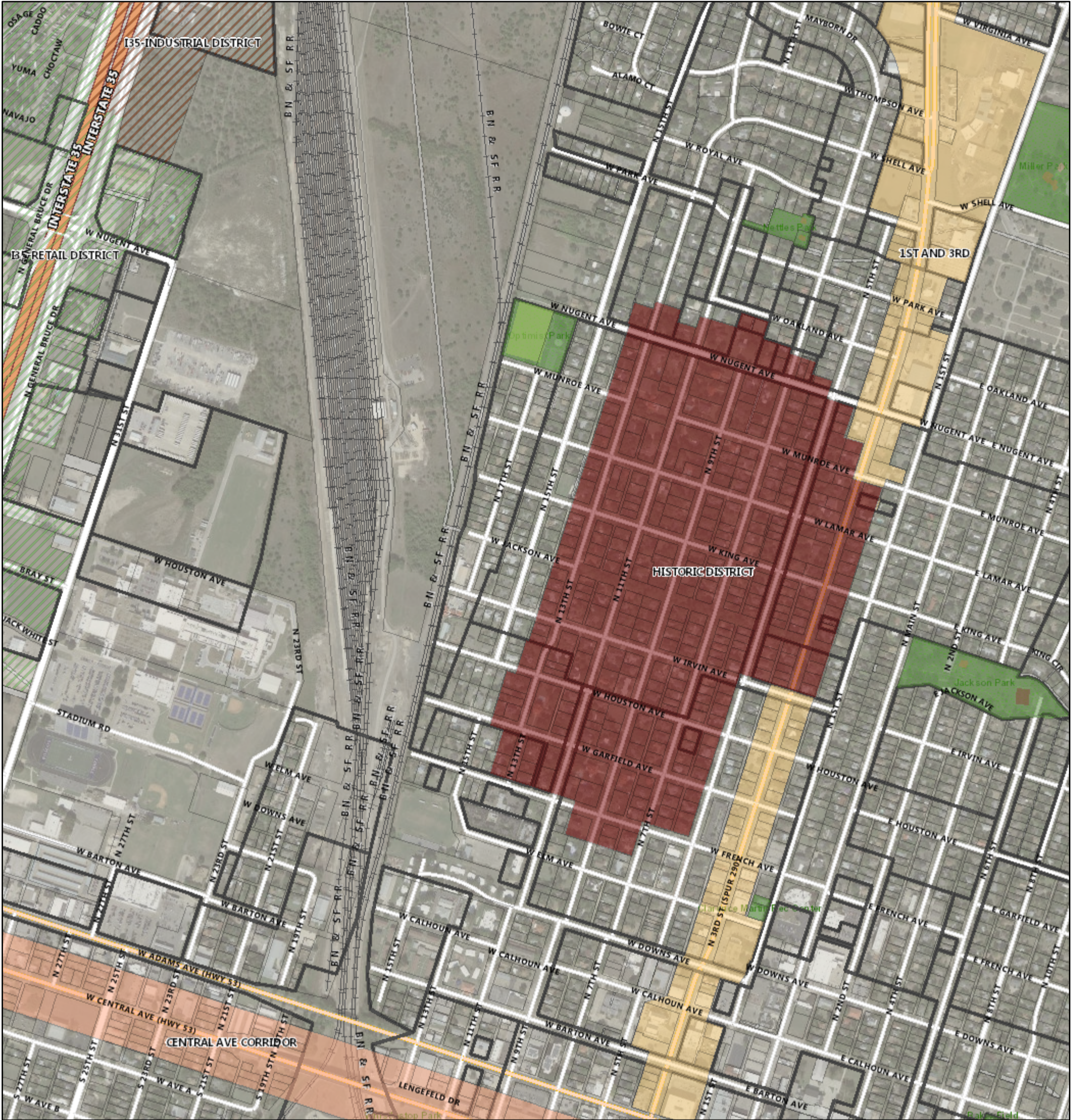


# North Central Temple Historic District



6/3/2020, 12:50:35 PM

1:9,028

- |   |                   |                      |                                  |
|---|-------------------|----------------------|----------------------------------|
| Parcels                                 | TMED/T5-C         | PARKING              | Bell County Municipal Boundaries |
| Zoning Overlay Districts<br>1ST AND 3RD | TMED/T5-E         | PAVILION             | Park Areas                       |
| CENTRAL AVE CORRIDOR                    | Park Areas        | PLAYGROUND           | Temple Municipal Boundary        |
| HISTORIC DISTRICT                       | MUSEUM            | POOL                 | Railroad                         |
| I35-CONVENTION DISTRICT                 | POOL FACILITY     | SOCCER FIELD         | Streets<br>EXPRESSWAY            |
| I35-GATEWAY DISTRICT                    | PARK FACILITY     | SPLASH PAD           | MAJOR ARTERIAL                   |
| I35-INDUSTRIAL DISTRICT                 | CONVENTION CENTER | TENNIS COURT         | COLLECTOR                        |
| I35-RETAIL DISTRICT                     | CLUB HOUSE        | WATER PARK           | LOCAL STREET                     |
| TMED/SD-C                               | WATER FEATURE     | Easement             | MINOR ARTERIAL                   |
| TMED/SD-H                               | BASEBALL FIELD    | Subdivision          | PRIVATE                          |
| TMED/SD-T                               | BASKETBALL COURT  | Bell County Boundary | RAMP                             |
| TMED/SD-V                               | BATHROOM          | TempleBoundary       |                                  |
| TMED/T4                                 | COMMUNITY CENTER  |                      |                                  |

